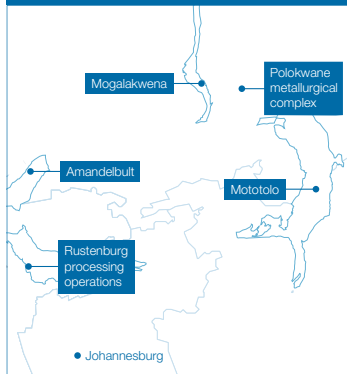


PLATINUM GROUP METALS (PGMS)

Inspired by our purpose to re-imagine mining to improve people's lives, we are committed to ensuring beneficial co-existence with host communities and to working collaboratively with our suppliers, communities and partners to ensure the development of thriving, healthy and inclusive communities beyond mining. In striving to ensure that our host communities are sustainable beyond life-of-mine, we place an emphasis on progressively increasing levels of procurement from local suppliers, supported by our supplier and enterprise development initiatives.

SUMMARY - 2019



5 Operations **>24,000** Employees*

3 SA provinces

0 Fatalities **2.50** TRCFR

R30.0bn Underlying EBITDA **44%** Mining EBITDA Margin**

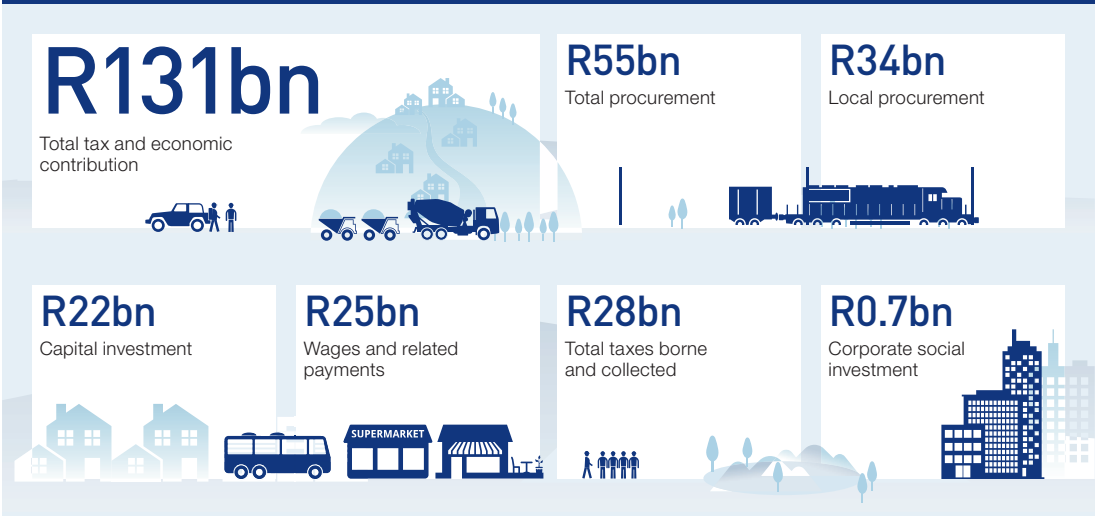
2,051koz Production volume – platinum

1,386koz Production volume – palladium

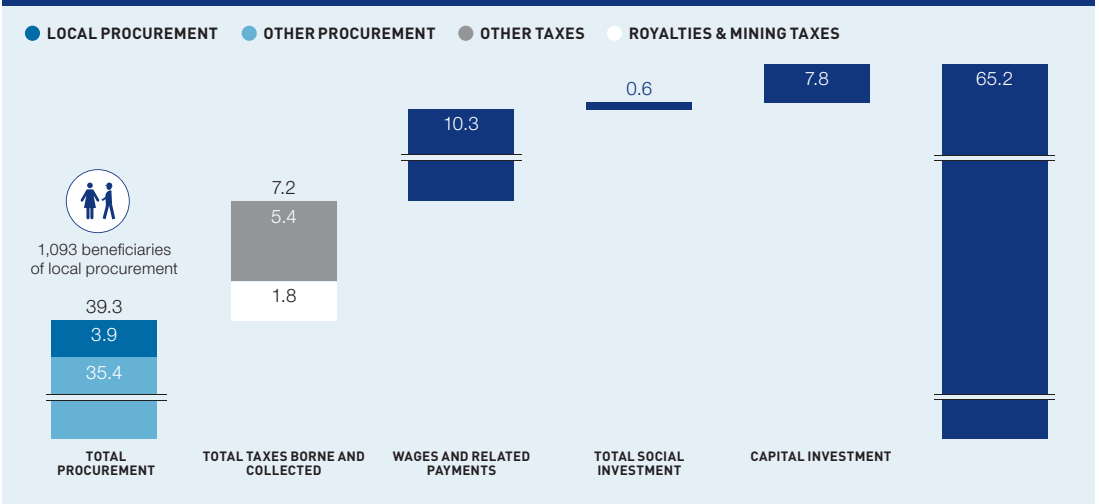
* Estimated Job Multiplier Effect of two for every job in mining (Minerals Council, 2019)

** Own mining operations

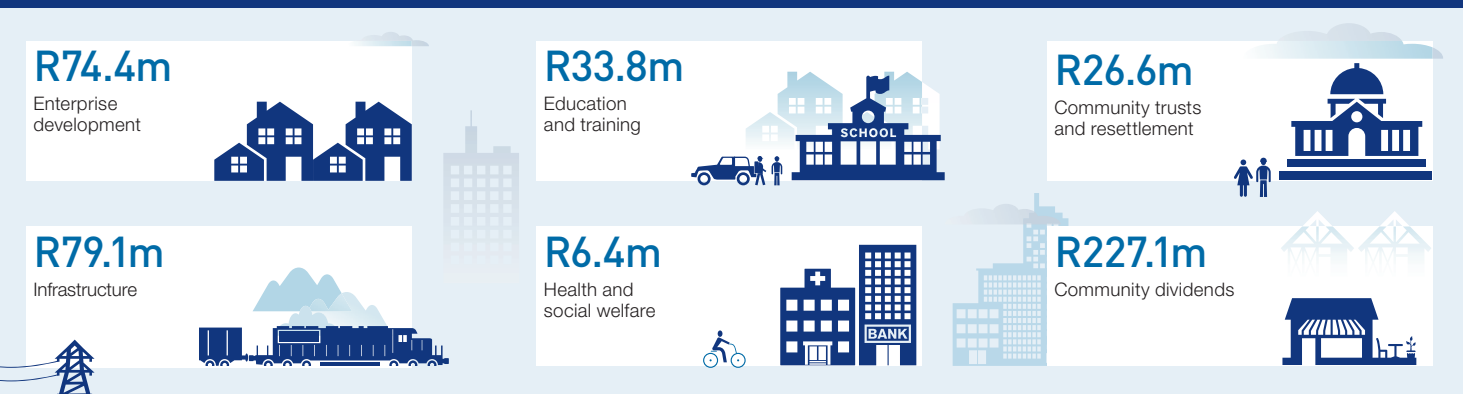
ANGLO AMERICAN ECONOMIC CONTRIBUTION IN SOUTH AFRICA IN 2019



2019 PGMS TAX & ECONOMIC CONTRIBUTION (R billion)



SOCIAL INVESTMENT HIGHLIGHTS AND SOCIAL IMPACT MANAGEMENT PROGRAMMES 2019



PLATINUM GROUP METALS (PGMS) CONTINUED

KEY VALUE CONTRIBUTORS



EDUCATION

>26,000

learners supported through 26 schools



HEALTH

>69,000

people benefit from community health programmes



LIVELIHOODS

>11,000

jobs supported through Zimele programmes, enterprise development and local procurement



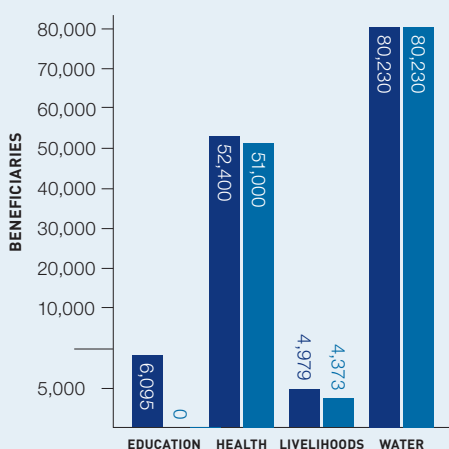
WATER

>100,000

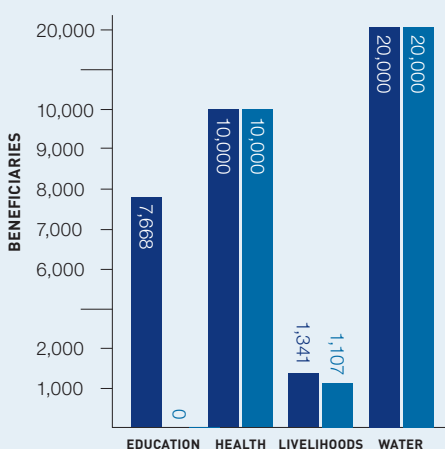
people provided with water

ASSET BREAKDOWN

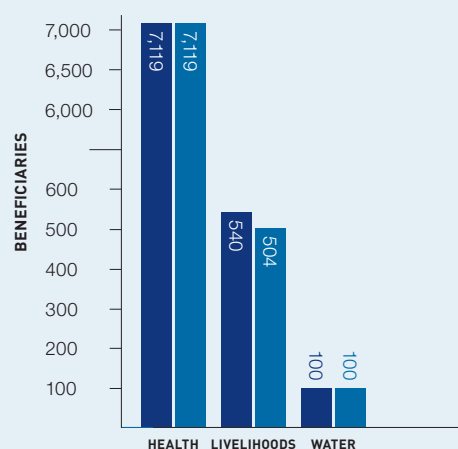
MOGALAKWENA



AMANDELBULT



MOTOTOLO



* Estimated number of beneficiaries from our socio-economic initiatives.

ACTIONS IDENTIFIED FOR SUPPORTING THE RESPONSE TO COVID-19

In South Africa, Anglo American is working to identify additional actions to support communities in the response to COVID-19 during lockdown and beyond. We have committed ZAR190m⁽¹⁾ to our COVID-19 response and will update our contributions regularly. Platinum's contribution to the COVID-19 response includes:



Nutrition

Distribution of up to 21,000 food parcels over a three month period to communities around our operations in South Africa. This will provide essential support to households during the three month period.



Community awareness and education support

Through the provision of information on local government and Anglo American support in local communities, health guidelines and the distribution of community recovery resources.



Health care support

Anglo American Platinum is aiming to support 74 clinics in and around our host communities. Support may vary depending on government priorities and needs assessments, however the support will focus on:

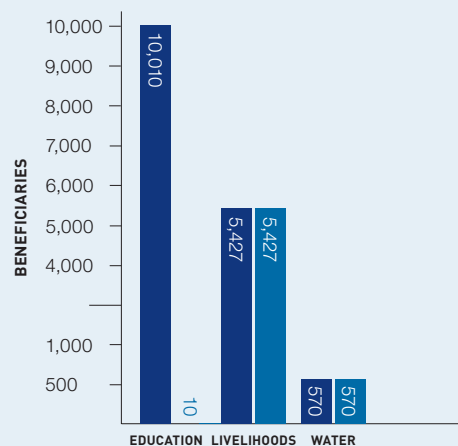
- Covid screening stations
- Medical PPE provision (Subject to availability)
- Training and clinician support
- The production of training videos for the broader community



Water

In addition to our ongoing community water provision projects, we will be providing water trucks to support around 21 additional villages in our host communities during the period. This will aim to support around 53,000 people with 50 litres of water per person per day for six months. In addition, we will be supporting two municipalities (Rustenburg and Polokwane) totalling 5,400 people by providing them with water tankers.

POLOKWANE metallurgical complex and RUSTENBURG processing operations (combined)



⁽¹⁾ Equivalent to USD 10 million at spot foreign exchange rate.